

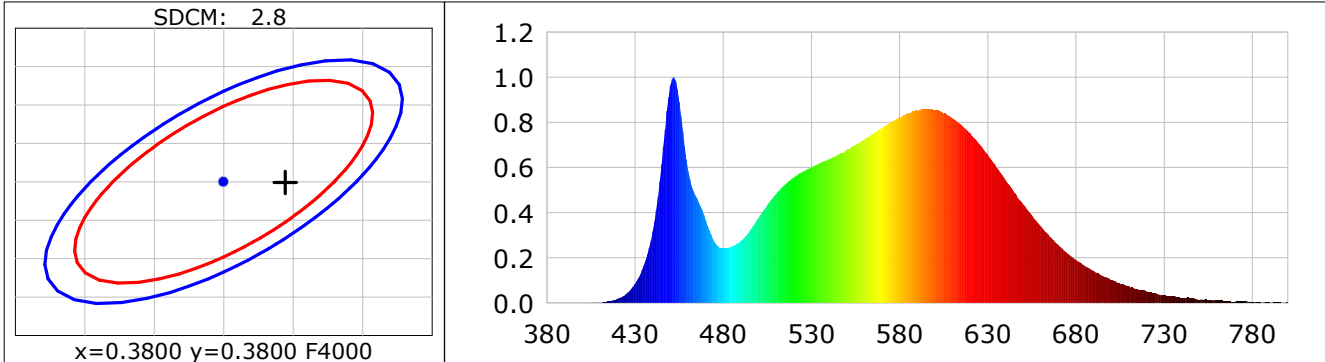
**Lightsource Test Report**

**Product Infomation**

Product Category: LED STRIP	Product Type: LED STRIP
Product Spec: DRAC 9	Product Number: 236
Manufacturer: TECSOLELED S.L.	Buyer: TECSOLELED S.L.

**CIE Colorimetric Parameters**

Chromaticity coordinates:  $x=0.3844$   $y=0.3799$   $u(u')=0.2265$   $v=0.3357$   $v'=0.5036$   
 CCT:  $T_c=3917K$  ( $duv=0.00033$ ) Color Ratio:  $R=0.186$   $G=0.779$   $B=0.035$   
 Peak Wavelength: 451.8nm Half Bandwidth: 19.5nm  
 Dominant Wavelength: 579.2nm Color Purity: 0.294  
 CRI:  $R_a=82.8$ ,  $avgR(1\sim14)=76.1$ ,  $avgR(1\sim15)=76.1$  TM30:  $R_f=83$ ,  $R_g=95$   
 GAI:  $GAI\_BB\_8=91.9$ ,  $GAI\_BB\_15=99.3$ ,  $GAI\_EES=71.2$   
 R1 =81 R2 =89 R3 =95 R4 =81 R5 =81 R6 =85 R7 =85 R8 =64  
 R9 =8 R10=74 R11=80 R12=60 R13=83 R14=97 R15=75  
 Color Quality Scale:  $Q_a=82.4$ ,  $Q_f=82.6$ ,  $Q_p=82.2$ ,  $Q_g=92.4$   
 Q1 =82 Q2 =98 Q3 =79 Q4 =75 Q5 =80 Q6 =83 Q7 =85 Q8 =89  
 Q9 =98 Q10=89 Q11=85 Q12=84 Q13=83 Q14=73 Q15=76



**Photometric Parameters**

Luminous Flux: 1205.6 lm Efficiency: 141.47 lm/W Radiant Power: 3.613 W  
 Total mains efficacy: 131.00 lm/W Energy Efficiency Class: E (EU 2019/2015)

**Electric Parameters**

Voltage: 24.000V Current: 0.3551A Power: 8.52W  
 Power Factor: 1.0000 Frequency: 0.00Hz

**Test Infomation**

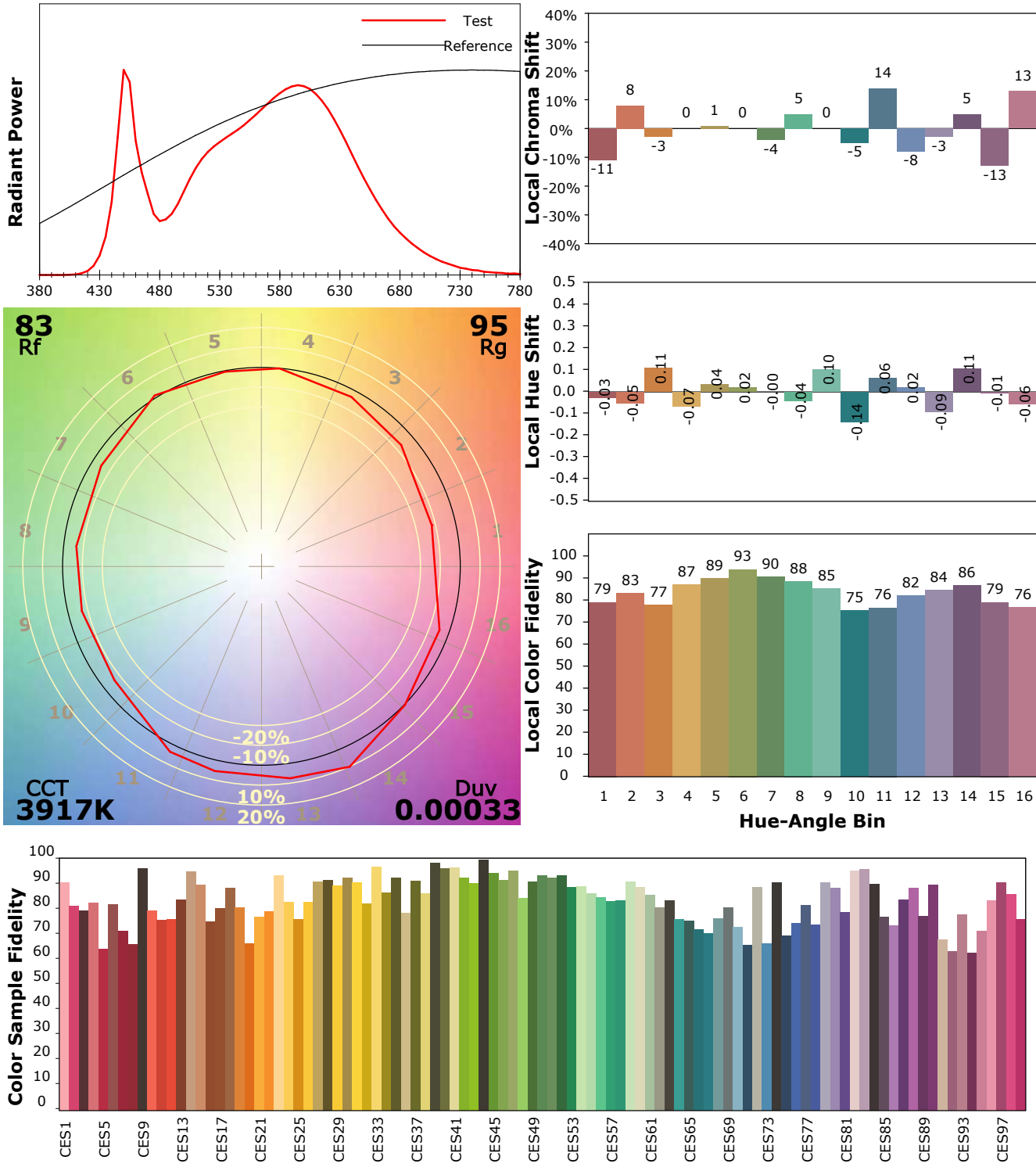
Scan Range: 380~800:1nm Photometric Method: sphere-spectroradiometer  
 Stabilization Time: 0 Sec ALC.: 1.0000 Photometric Condition: Sphere diameter: 1.50m, 4PI  
 Max of Signal: 46319 (2243) CCD Integration Time: 458.87 ms

## IES TM-30-18 Color Rendition Report

**Product Information**

Product Category: LED STRIP  
 Product Spec: 21059602440521  
 Manufacturer: TECSOLED S.L.

Product Type: LED STRIP  
 Product Number: 236  
 Buyer: TECSOLED S.L.



Condition: Tx:20.8°C, Ti:19.4°C, R.H.:60%  
 Test Lab: TECSOLED S.L.  
 Operator: JORDAN GIL DIAZ

Test Device: Inventfine CMS-2S (Plus)  
 Test Time: 2021-10-28 11:47:59  
 Inspector: